

TYPE TEST CERTIFICATE OF COMPLETE TYPE TESTS

Holley Technology Ltd.,
No.181 Wuchang Avenue, Yuhang District,
310023 HANGZHOU,
China

Certificate No.
1791-24

Revision 0



Type DTSD545
Object Electronic three-phase four-wire energy meter.
Direct connected

The object has been assessed and meets the requirements of
IEC 62052-11:2020, IEC 62053-21:2020 and IEC 62053-23:2020.

This Certificate is based on the report(s) listed in the report list in this Certificate.

KEMA Labs

· 1927 ·

Gold

This Certificate comprises 7 pages in total.

Issued by KEMA B.V.
Klingelbeekseweg 195,
Arnhem, The Netherlands

Alessandro Bertani
Director,
Services & Smart Technologies

Arnhem, January 9, 2025

REVISION OVERVIEW

The edition with the highest revision number always replaces the earlier issued editions.

Rev. No.	Date of issue	Reason
0	January 9, 2025	First issue

REPORT LIST

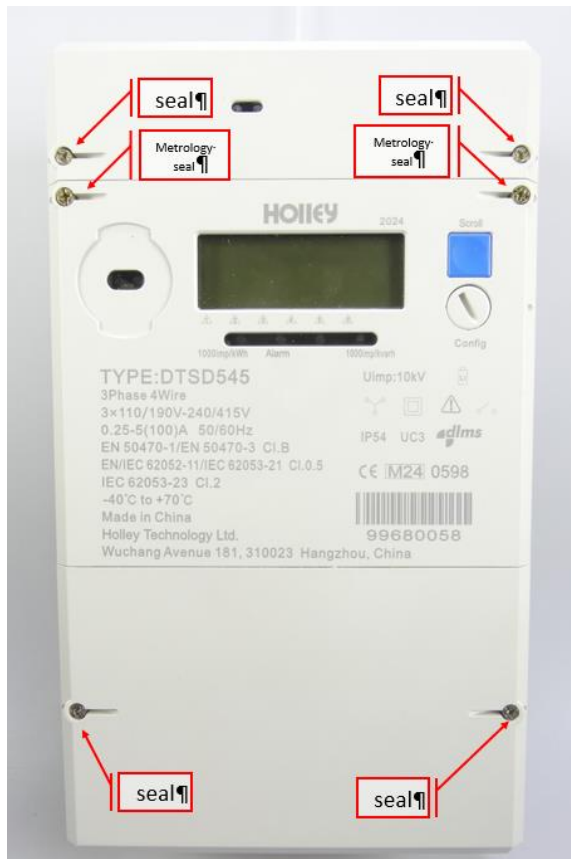
This Certificate is issued based on the following reports.

Report number	Revision	Firmware version
1643-24	0	11.00.00.00
1644-24	0	11.00.00.00
1645-24	0	11.00.00.00
1663-24	0	11.00.00.00
1790-24	0	11.00.00.00

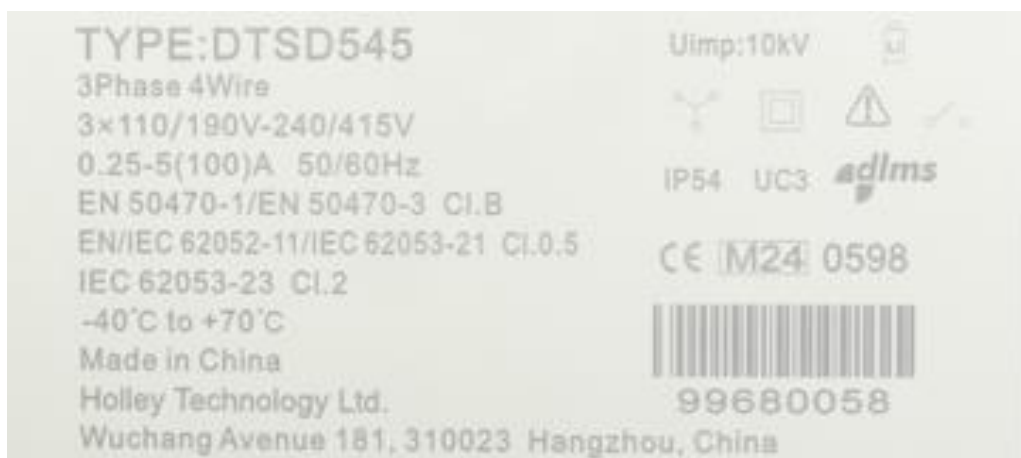
1 TECHNICAL DATA

Manufacturer	Holley Technology Ltd., No.181 Wuchang Avenue, Yuhang District, 310023 HANGZHOU, China
Production location	Holley Technology Ltd., No.181 Wuchang Avenue, Yuhang District, 310023 HANGZHOU, China
Type	DTSD545
Model	-
Connection	Direct
Type of circuit	3P4W
Accuracy class Wh	0,5/B
Accuracy class varh	2
Meter constant	1000 imp/kWh 1000 imp/kvarh
V range	3*110/190 V to 3*240/415 V
I range $I_{min}-I_n(I_{max})$	0,25-5(100) A
Frequency	50 and 60 Hz
Temperature range	-40 – 70 °C
Use	Indoor
IP rating	IP54
Protection Class	II
Impulse voltage	6 and 10 kV
Internal clock	Crystal controlled
Environmental class	M1, M2, E1 and E2, CISPR32 class B
Utilisation category	UC3
LR Firmware ID	11.00.00.00
LR Firmware CRC	d21ECE1C
Registry method(s):	Vectoral computation method

2 PHOTOGRAPHS AND SEALING



3 EXAMPLES OF NAME PLATES



4 OPTIONS AND VARIANTS

Overview of variants with details

Type designation	Details of the meter
DTSD545	<ul style="list-style-type: none">• Communication options:<ul style="list-style-type: none">- optical port- RS485- WiFi 4G- PLC- M-Bus• Pulse output• Supply control switch• external relay• RJ45/P1

END OF DOCUMENT

The laboratories of KEMA Labs are:

- CESI S.p.A., Milan, Italy.
- FGH Engineering & Test GmbH, Mannheim, Germany.
- IPH Institut "Prüffeld für elektrische Hochleistungstechnik" GmbH, Berlin, Germany.
- KEMA B.V., Arnhem, The Netherlands.
- KEMA Labs, Zkušebnictví, a.s., Prague, the Czech Republic.
- KEMA-Powertest, LLC, Chalfont, United States.